

## NOISE DATA

Model Number	Avg. dB(A) @ 3m	In-duct Sound Power Levels $L_w$ dB re 1pW							
		63	125	350	500	1k	2k	4k	8k
<b>RIL-100</b>	38	54	48	60	57	54	47	37	29
<b>125</b>	39	54	50	60	58	56	50	41	33
<b>150</b>	44	54	54	61	61	60	57	50	42
<b>200</b>	49	53	58	61	64	64	65	59	52

Sound Power Levels shown are based on the high speed inlet side for each fan.

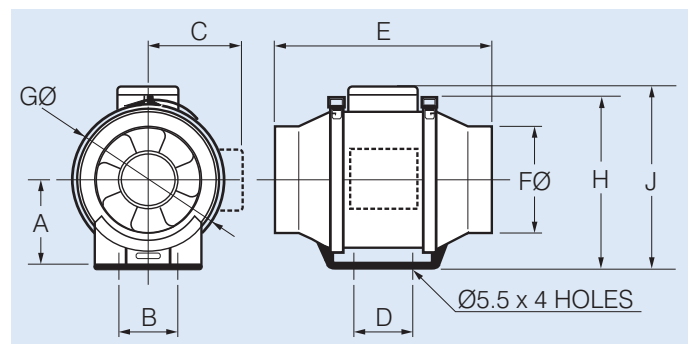
## SUGGESTED SPECIFICATIONS

The in-line fans shall be of the ProVent Series as supplied by Fantech Pty Ltd and be of the model numbers shown on the schedule/drawings.

Impellers shall be of mixed-flow design and driven by a single-phase motor. Internal thermal protection shall be by fuse on 100 and 125mm spigot models and by manual-reset on 150 and 200mm models.

It shall include an integral mounting foot, plug and lead and specially designed support brackets to enable motor removal. All fans shall be fully tested to ISO5801: Part1, 1997 for air flow and BS848:Part 2, 1985 for noise.

## DIMENSIONS



Model Number	Dimensions, mm									
	A	B	C	D	E	FØ	GØ	H	J	
<b>100</b>	100	60	88	80	303	97	180	205	215	
<b>125</b>	100	60	88	80	258	123	180	205	215	
<b>150</b>	112	60	100	80	295	147	203	225	239	
<b>200</b>	124	94	109	100	302	198	220	251	265	